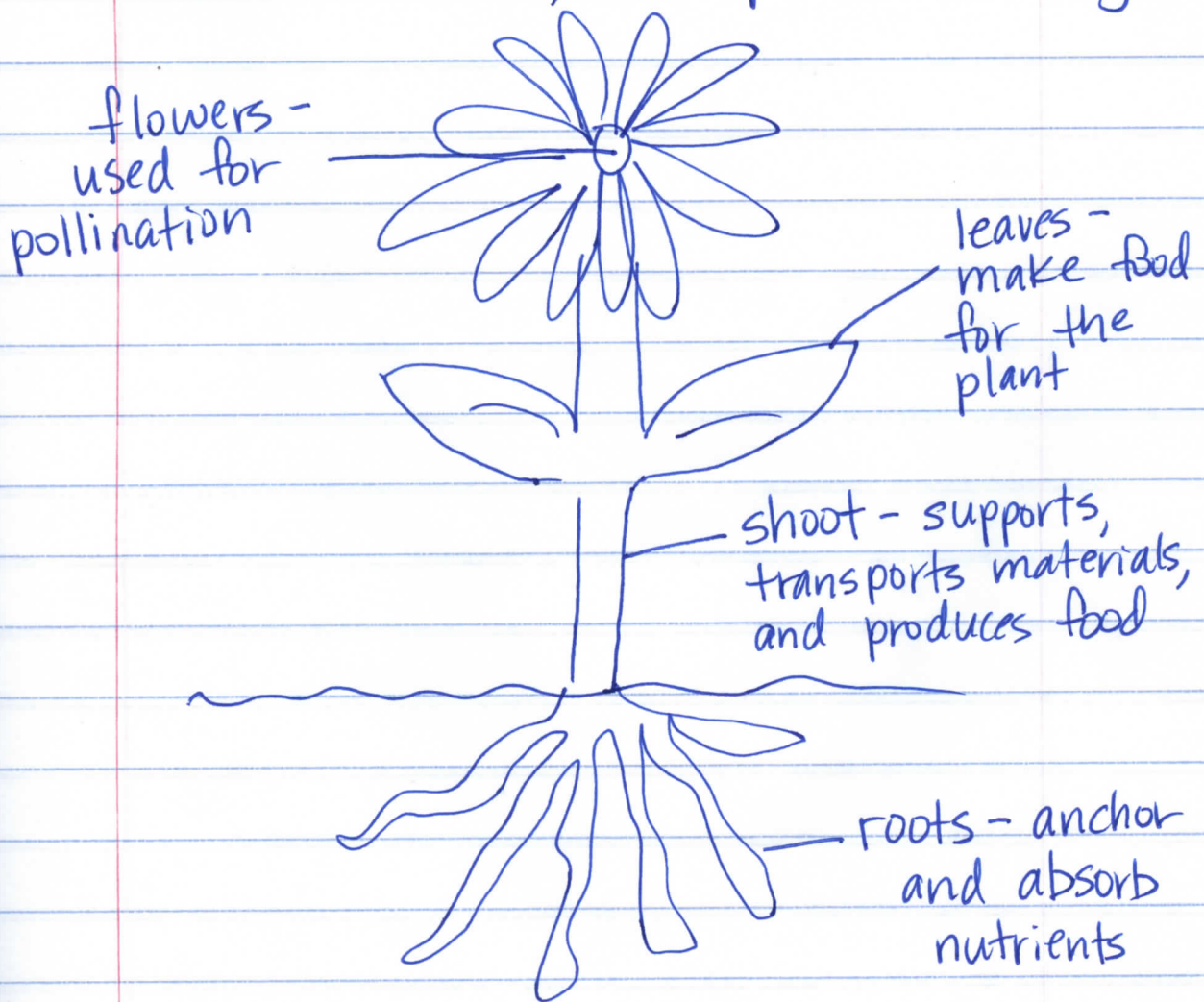


Vascular Plants

spore - a single cell that can develop into a new plant that is exactly like the plant that produced it.

seed - contains an undeveloped plant, stored food, and a protective covering.



Brain Pop notes:

Notes: Seedless Plants -

Notes: Video "What is a fungus?"

Notes: Video "Attack of the small plants" - Seed Plants