



Xylem and Phloem

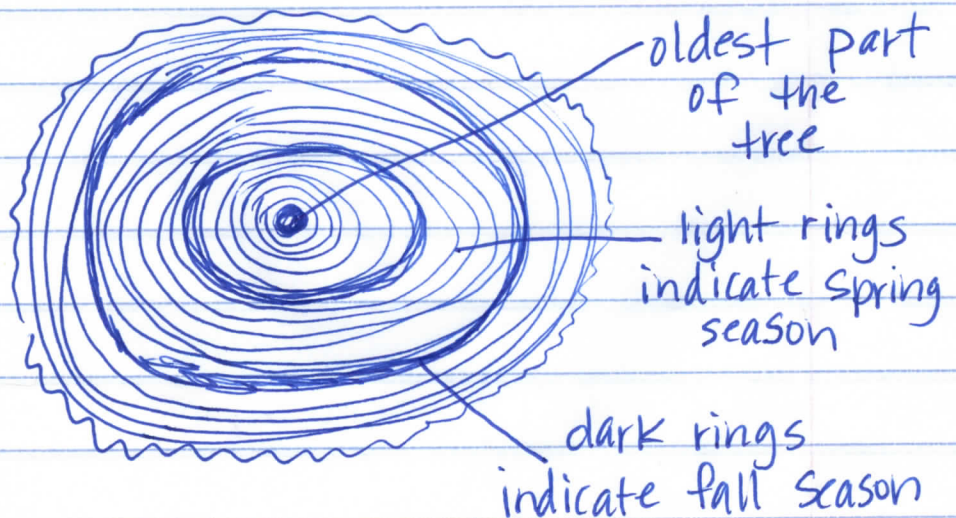
xylem - plant tissue that moves water and minerals up from the roots

phloem - tissue in a plant that moves food (sugar/glucose) down from the leaves to other parts of the plant.

cambium - where xylem and phloem cells are produced

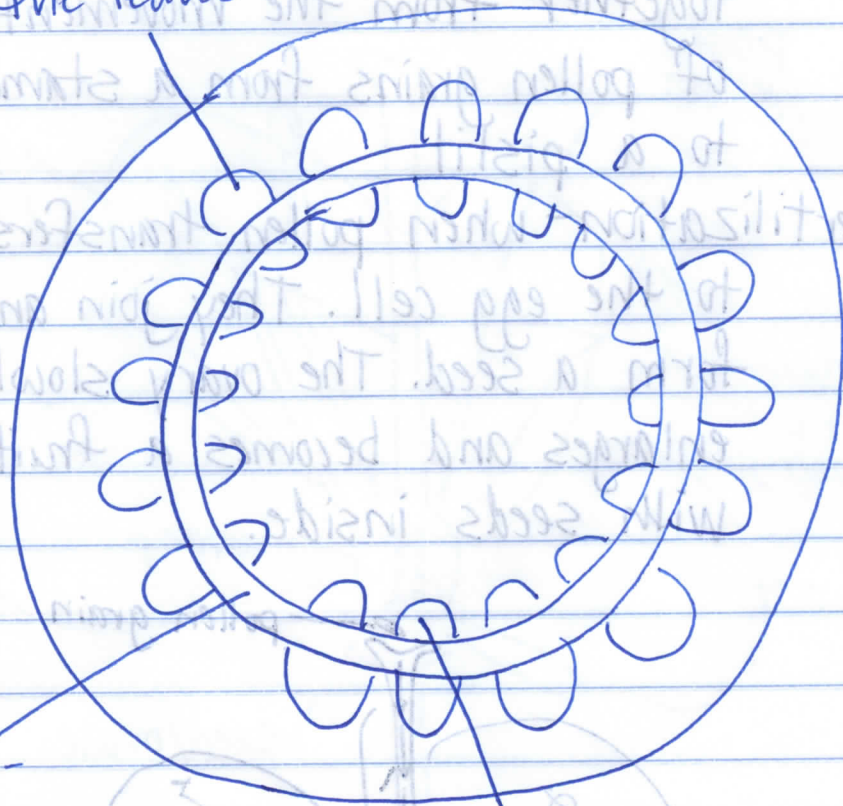
Tip: ^{Think} "Xy" to the sky 
"Phloe" down low 

Cross-section of a Tree



Cross-section of a Vascular Plant

phloem - sugars
"flow" down from
the leaves



cambium -
"transport
manager"
creates new
xylem and
phloem cells

xylem - water
and nutrients
move up from the
roots

"zee water moves
up from zee roots"